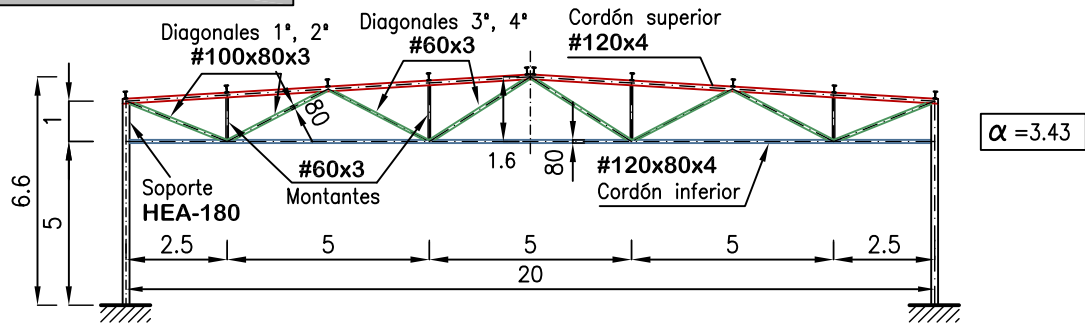


GEOMETRIA PERFILES

Unidades: m, kg

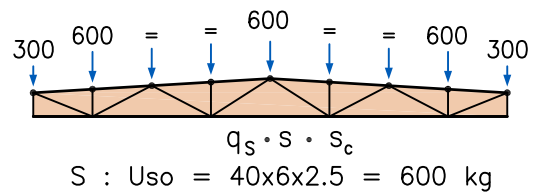


ACCIONES

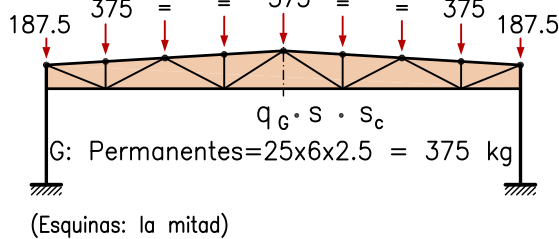
COMBINACIONES Añadir a Comb1, Comb2, ELS-1, ELS-2:
 Comb3) $1.35 G + 0.75 N + 1.5 V2$
 ELS-3) $G + 0.5 N + V2$

$q_G = 25$ $s = 6.0\text{m}$ (Pórticos)
 $q_S = 40$ $s_c = 2.5\text{m}$ (Correas)
 $q_N = 30$

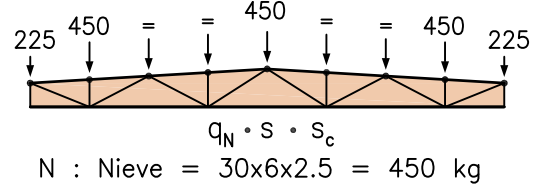
SOBRECARGA DE USO



ACCIONES PERMANENTES



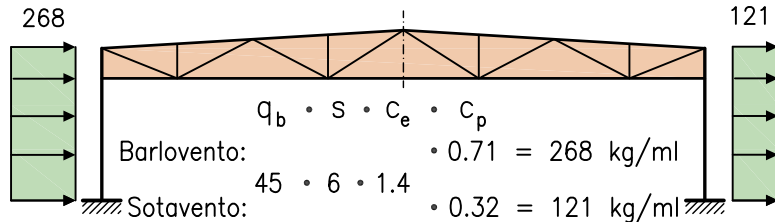
SOBRECARGA DE NIEVE



VIENTO PILARES V2

(igual al pórtico) $q_b = 45$

$C_e = 1.40$
 $C_{p,barlovent} = 0.71$
 $C_{p,sotavent} = 0.32$



VIENTO CUBIERTA V2

Carga puntual en extremo de barra

$C_e = 1.50$ $C_p = 0.20$

Longitud zona I

Número de barras con carga:

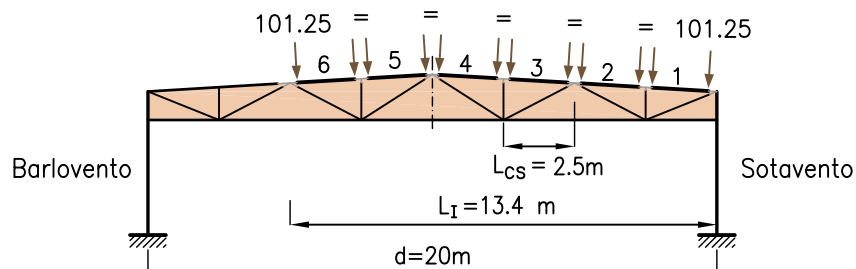
$$q_b \cdot s \cdot C_e \cdot C_p \cdot L_{cs} / 2$$

$$45 \times 6 \times 1.5 \times 0.2 \times 2.5 / 2 = 101.25 \text{ kg}$$

$$e = 2h < b \quad L_I = d - \frac{e}{2}$$

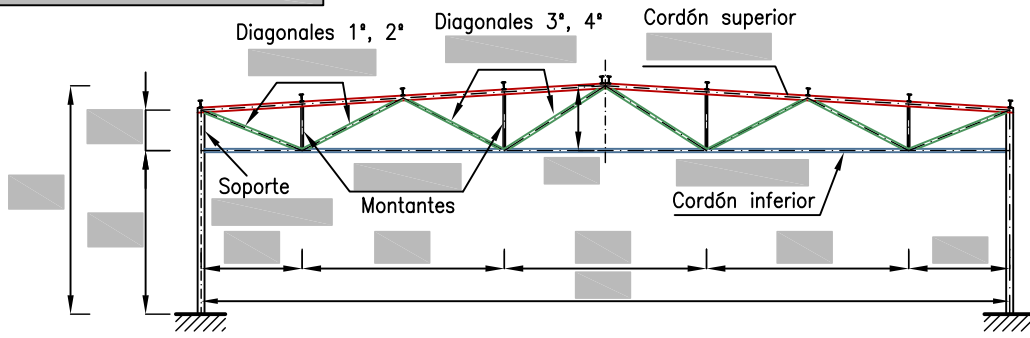
$$e = 13.2 \text{ m} \quad L_I = 20 - \frac{13.2}{2} = 13.4 \text{ m}$$

$$\frac{L_I}{L_{cs}} = \frac{13.4}{2.5} = 5.4 \text{ barras} \rightarrow 6 \text{ barras}$$



GEOMETRIA PERFILES

Unidades: m, kg

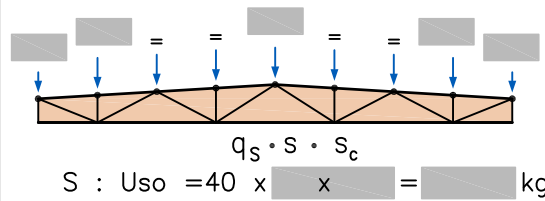


ACCIONES

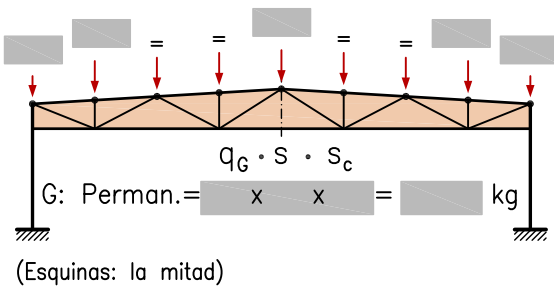
COMBINACIONES Añadir a Comb1, Comb2, ELS-1, ELS-2:
 Comb3) $1.35 G + 0.75 N + 1.5 V2$
 ELS-3) $G + 0.5 N + V2$

$q_G = \dots$ $s = \dots$ m (Pórticos)
 $q_S = 40$ $s_c = \dots$ m (Correas)
 $q_N = \dots$

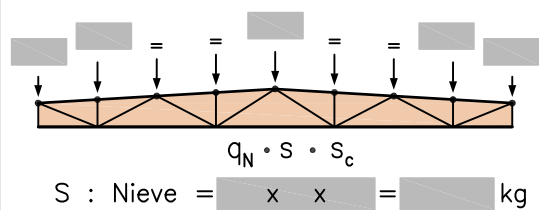
SOBRECARGA DE USO



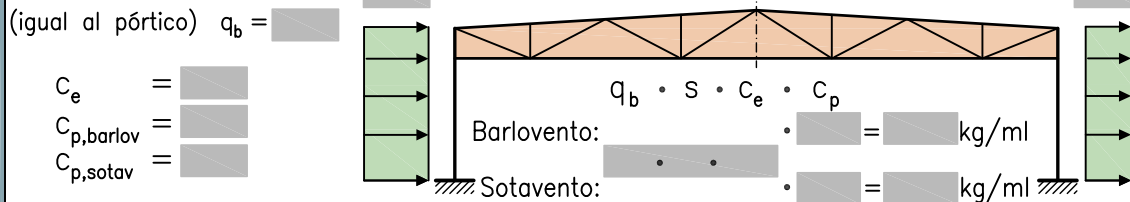
ACCIONES PERMANENTES



SOBRECARGA DE NIEVE



VIENTO PILARES V2



VIENTO CUBIERTA V2

Carga puntual en extremo de barra
 $C_e = \dots$ $C_p = 0.20$
 $q_b \cdot s \cdot C_e \cdot C_p \cdot L_{cs} / 2$
 $\dots \times \dots \times 0.2 \times \dots / 2 = \dots$ kg

Longitud zona I

$e = 2h < b$ $L_I = d - \frac{e}{2}$
 $e = \dots$ m $L_I = \dots - \frac{\dots}{2} = \dots$ m

Número de barras con carga:

$\frac{L_I}{L_{cs}} = \dots = \dots$ barras $\rightarrow \dots$ barras

